



Wellstar Health System

**CLINICAL NEUROPSYCHOLOGY
RESIDENCY PROGRAM**

APPCN Program Match Code: 8211



Callie Dunn, PhD, ABPP

Neuropsychology Residency Training Director

Dear Neuropsychology Resident,

Thank you for choosing Wellstar Health System's Clinical Neuropsychology Residency. We are dedicated to providing a top-tier training environment, consistent with Houston Conference guidelines with an eye toward updates to those guidelines. We are a member of the Association of Postdoctoral Programs in Clinical Neuropsychology (APPCN).

We are part of the largest and fastest growing hospital system in Georgia and are one of many Residency programs within Wellstar, an institution with a history of training exceptional medical professionals.

Your training will be a priority. You will enrich our environment and become a valued junior colleague as you pursue independent practice.

We offer diverse assessment and intervention experiences across the lifespan, depending on interest and prior experience. Outpatient neuropsychological evaluations with a wide range of neurological conditions will be a primary training experience. You will also have the opportunity to work on the Kennestone Hospital campus, a Level 1 Trauma Center (pictured on cover), primarily working in inpatient neurorehabilitation settings. Additional experiences include Left Ventricular Assist Device (LVAD) evaluations, Bariatric surgery evaluations, and potential hospital consults, conducted for a variety of reasons including dementia vs delirium.

In addition to clinical and research experiences, you will have ample teaching and supervision opportunities. For example, you will be a regular presenter in didactics and have the opportunity to work with psychometrists.

We are looking forward to working with you.

Sincerely,
Dr. Dunn

Callie Dunn, PhD, ABPP-CN
Neuropsychology Training Director
Wellstar Health System

OVERVIEW Nationally ranked and locally recognized for our high-quality care, inclusive culture, and exceptional doctors and caregivers, Wellstar Health System is one of the largest and one of the most integrated healthcare systems in Georgia. As a not-for-profit health system, our passion for people extends beyond our system and into the communities we serve. Wellstar cares for 1.6 million Georgians annually and provided \$1.2 billion in uncompensated and charity care last year—more than any other health system in Georgia.

Wellstar’s Mission: To enhance the health and well-being of every person we serve.

Wellstar’s Vision: Deliver world-class healthcare to every person, every time.

Wellstar’s Values:

We serve with compassion.

We pursue excellence.

We honor every voice.

Program Organization

The Clinical Neuropsychology Residency program is housed within the Psychology Service section of the Behavioral Health Service Line. The program is led by Training Director Callie Dunn, PhD, ABPP-CN who closely collaborates with Director of Neuropsychology Kirk Bryant, PhD, ABPP-CN. The program is supported by Behavioral Medicine Section Chief, Ryan Breshears, PhD, ABPP.

Training Committee: Callie Dunn, PhD, ABPP-CN (Training Director), Kirk Bryant, PhD, ABPP-CN (Director of Neuropsychology, Clinic Lead); Stephanie Salinas, PsyD, ABPP-CN; Charlotte Bayer, PsyD, ABPP-CN; Kayla Steward, PhD, ABPP-CN, Angelina Witbeck, PsyD, Jessica Robbins, PhD (neurorehabilitation), Jonathan Dodd, PsyD, ABPP-CN (pediatric), and Alyssa Krentzel, PsyD (pediatric).

Callie Dunn, PhD, ABPP-CN

Training Director Dr. Dunn is excited to be engaged in training within Wellstar and has been at the outpatient clinic since 2017. She successfully completed a 2-year postdoctoral residency in clinical neuropsychology at the Michael E. DeBakey VA Medical Center in Houston, Texas, her internship at the Emory University School of Medicine, and her doctoral degree from the University of Florida Department of Clinical and Health Psychology with a focus on neuropsychology and neurodegenerative conditions throughout her research and clinical training. She previously served as the Chair of the Early Career Neuropsychologist Committee within the Society for Clinical Neuropsychology and was so honored to be named the 2021 AACN Mentor of the Year. In her personal time, she enjoys spending time with her husband, son, daughter, and adorable dog. She volunteers within her church and loves all things nerdy with a particular fondness for



high fantasy. You may also find her occasionally joining as a guest on her husband's YouTube channel—don't forget to like and subscribe!

Kirk Bryant, PhD, ABPP-CN

Dr. Bryant has been with Wellstar since 2018 and serves as the Director of Neuropsychology and Clinical Lead at the Merchants Station outpatient clinic. Previously, he practiced at West Virginia University (WVU) School of Medicine, serving over 2 years as faculty and training committee member within their APPCN fellowship and APA accredited internship. Prior to this, he completed his 2-year postdoctoral residency at the same institution; internship at the Missouri Health Sciences Psychology Consortium; doctorate in clinical psychology at Saint Louis University; and master's degree in clinical psychology at Cleveland State University. Dr. Bryant specializes in neurodegenerative conditions and has a particular interest in movement disorders. Research interest includes test development, underserved populations, the neurological basis of empathy and spirituality, and substance use. His primary mission is to have an impact on the field of neuropsychology through training and mentorship. He presently lives in the foothills of north Georgia. In this spiritually engaging environment, he enjoys homebrewing, playing guitar, and cheering for his hometown Pittsburgh sports teams. Thankfully, he has had enough sense to adopt the Braves and develop a passion for college football, particularly his wife's favorite team, The Alabama Crimson Tide.



Jonathan N. Dodd, PsyD, ABPP-CN

Dr. Dodd has been with Wellstar since 2018 and serves as the pediatric specialist at Merchants Station outpatient office. Previously, he practiced at Washington University/St. Louis Children's Hospital, serving over 6 years as faculty and 2 years as co-training director within their APPCN fellowship. Prior to this, he completed his 2-year postdoctoral residency at the University of Wisconsin – Madison, Department of Neurology; Internship at The Watson Institute, in Pittsburgh, PA specializing in pediatric neuropsychology and autism spectrum disorders; and doctorate in clinical psychology at Georgia School of Professional Psychology. Dr. Dodd's clinical interest include pediatric epilepsy, concussion, and somatization disorders. Research interests include performance validity testing in children and traumatic brain injury. In his free time, you can find Dr. Dodd painting and spending time with his three boys.



Stephanie L. Salinas, PsyD, ABPP-CN

Dr. Salinas was delighted to join Wellstar in 2020 and return to living in the beautiful state of Georgia. She earned her PsyD in Clinical Psychology with an emphasis in neuropsychology from the Georgia School of Professional Psychology at Argosy University – Atlanta. After graduate school, she went on to complete a neuropsychology focused pre-doctoral internship at the University of Arkansas for Medical Sciences and APPCN



member residency at the VA St. Louis Health Care System. Dr. Salinas' research and clinical interests include the cognitive sequelae of TBI, movement disorders, cognitive rehabilitation, and differentiating between various types of dementia to provide effective treatment recommendations and psychoeducation to patients, their families, and treating providers. When Dr. Salinas is not at work, you can find her spending time with her wonderful husband, daughter, and Jack Russell Terrier, attending Orangetheory Fitness classes, bingeing true crime podcasts/documentaries, and perfecting her archery skills to become the next Katniss Everdeen.

Jessica Robbins, PhD

Dr. Robbins has been with Wellstar since 2020. Her inpatient and outpatient offices are housed on the Kennestone Hospital campus. She enjoys providing support and education for individuals diagnosed with acquired brain injuries and neurodegenerative conditions and their caregivers, while also supporting integrated rehabilitation teams. Prior to joining Wellstar, she practiced at the Shepherd Center and served as a supervisor within their APPCN residency. She completed her doctorate at Nova Southeastern University, her internship at the University of Alabama at Birmingham, and APPCN residency at West Virginia University School of Medicine. In her free time, she enjoys live music, trying new craft beers, hiking, stargazing, and traveling. She also competes, albeit poorly, in a cornhole league with her family.



Charlotte Bayer, PsyD, ABPP-CN

Dr. Bayer completed her clinical neuropsychology residency at Wellstar and joined faculty in 2022. She earned her PsyD in Clinical Psychology with an emphasis in neuropsychology from the Chicago School of Professional Psychology. She completed an APA accredited internship with a neuropsychology focus at the Memphis VA Medical Center. Her current clinical responsibilities with Wellstar include providing outpatient neuropsychological services at the Merchants Station office. She enjoys providing broad neuropsychological assessment and intervention services for adults and older adults with diverse neurological, medical, and psychiatric conditions. Additional interests include providing family/caregiver services, neuroimaging, and cognitive rehabilitation. In her spare time, she enjoys traveling, playing pickleball, watching true crime documentaries, supporting Tennessee Volunteer football, and taking a hike with her dog, Beans.



Kayla Steward, PhD, ABPP-CN

Dr. Steward joined the Wellstar team in 2022. She is originally from Texas and earned her PhD in Medical/Clinical Psychology from the University of Alabama at Birmingham and went on to complete her predoctoral internship and postdoctoral residency in neuropsychology at the James A. Haley Veterans' Hospital in Tampa, FL. Dr. Steward comes to us with a stellar early career CV with diverse inpatient and outpatient experiences as well as close to 20 peer reviewed publications, being the first author of half. Dr. Steward conducts outpatient evaluations at Merchants Station. Her clinical and research interests are broadly within the areas of geriatric neuropsychology and health psychology, with a special interest in MCI/dementia, TBI, stroke, and providing support/education services to their caregivers and family. In her free time, she enjoys hiking and camping in the North Georgia mountains with her dog, running (currently training for a half marathon!), horseback riding, and going to art and music festivals.



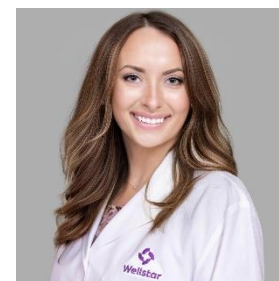
Alyssa Krentzel, PsyD

Dr. Krentzel has been with Wellstar since 2023. She earned her PsyD in Clinical Psychology from the Chicago School of Professional Psychology. She completed an APPCN member post-doctoral residency in pediatric neuropsychology at Texas Children's Hospital and an APA accredited internship at Children's Hospital of Michigan. She provides neuropsychological evaluations with children across the developmental spectrum (infancy through young adulthood) with diverse neurological, medical, genetic, and developmental needs. She is passionate about honoring neurodiversity and providing culturally sensitive, family centered care. In her spare time, Dr. Krentzel enjoys reading, exercising, taking care of her many house plants, and spending time with her husband and dog.



Angelina Witbeck, PsyD

Dr. Witbeck joined the neuropsychology faculty in 2024. She earned her doctorate in clinical psychology with an emphasis in neuropsychology from the Illinois School of Professional Psychology at National Louis University – Chicago. She completed a neuropsychology track pre-doctoral internship at VA North Texas Health Care System and APPCN member clinical neuropsychology residency at Wellstar Health System. Dr. Witbeck works in the adult neuropsychology outpatient clinic. Clinically, she is passionate about working closely with the geriatric population and their caregivers to provide treatment recommendations within the context of neurodegenerative processes and complex medical histories. Additional interests include modifiable behaviors for dementia prevention and reducing cardiovascular burden on cognition. In her free time, she enjoys reading, trying new recipes, wandering around HomeGoods and exploring North Georgia breweries with her husband and their dog, Bane.



Training Model and Philosophy

Our goal is to provide advanced training in the specialty of clinical neuropsychology that prepares Residents for independent practice. We understand that Residents enter the program with strengths and weaknesses. An evolving, individualized training plan will be utilized to facilitate progression towards the goal of independent practice. We seek to prepare Residents for pursuit of board certification in clinical neuropsychology through the American Board of Professional Psychology (ABPP). Our program is consistent with guidelines of the Houston Conference for Training in Clinical Neuropsychology and look forward to future updates to those guidelines. We are members of the Association of Postdoctoral Programs in Clinical Neuropsychology (APPCN) and participate in the Match.

Clinical Neuropsychology Objectives

Training will be guided by the competencies expected by the American Board of Professional Psychology (ABPP) and American Board of Clinical Neuropsychology (ABCN; see ABCN Candidate Manual). See Rey-Casserly, Roper, and Bauer (2012) and Smith on behalf of the CNS (2019) for elaborations.

Foundational Competencies

- 1. Professionalism**
Demonstrating professional values and ethics as evidenced in behavior and comportment that reflect the values and ethics of psychology, integrity, and responsibility.
- 2. Reflective Practice/Self-Assessment/Self-Care**
Practice conducted with personal and professional self-awareness and reflection; with awareness of competencies, with appropriate self-care.
- 3. Scientific Knowledge and Methods**
Understanding of research, research methodology, techniques of data collection and analysis, biological bases of behavior, cognitive-affective bases of behavior, and development across the lifespan. Respect for scientifically derived knowledge.
- 4. Relationships**
Relate effectively and meaningfully with individuals, groups, and/or communities.
- 5. Individual and Cultural Diversity**
Awareness, sensitivity, and skills in working professionally with diverse individuals, groups, and communities who represent various cultural and personal backgrounds and characteristics defined broadly and consistent with APA policy.
- 6. Ethical Legal Standards and Policy**
Application of ethical concepts and awareness of legal issues regarding professional activities with individuals, groups, and organizations.
- 7. Interdisciplinary Systems**
Knowledge of key issues and concepts in related disciplines. Identify and interact with professionals in multiple disciplines.

8. Evidence-Based Practice

Demonstration of the capacity to integrate current research literature into clinical practice, research/evaluation, and other functional competency domains where applicable.

Functional Competencies

1. Assessment

Assessment and diagnosis of problems, capabilities, and issues associated with individuals, groups, and/or organizations.

2. Intervention

Interventions designed to alleviate suffering and to promote the health and well-being of individuals, groups, and/or organizations.

3. Consultation

The ability to provide expert guidance or professional assistance in response to a client's needs or goals.

4. Research/Evaluation

Generating research that contributes to the professional knowledge base and/or evaluates the effectiveness of various professional activities.

5. Supervision

Supervision and training in the professional knowledge base and of evaluation of the effectiveness of various professional activities.

6. Teaching

Providing instruction, disseminating knowledge, and evaluating the acquisition of knowledge and skill in professional psychology.

7. Management-Administration

Manage the direct delivery of services and/or the administration of organizations, programs, or agencies in areas of professional psychology.

8. Advocacy

Actions targeting the impact of social, political, economic, or cultural factors to promote change at the individual, clinic, service line, institutional, state, and national level.

Rotations and Programmatic Structure

Rotation structure and ordering will be developed by the Training Director according to trainee needs. Currently, a major rotation with 4 days per week for 4 months at a time is projected to be the typical structure. Fridays are reserved for didactics, research, administrative duties, and supervision, if needed. Rotations would be expected to include:

Outpatient Neuropsychology at Merchant's Station and Tower Road Office

Residents will rotate with neuropsychologists (e.g., 4-month blocks) seeing at least 3-4 evaluations per week. A majority of evaluations will involve Adults (18+), primarily 60+, with concerns for a neurodegenerative process (e.g., Alzheimer's disease, Parkinsonian conditions, frontal temporal lobe dementias). Other conditions, though not exclusive, include traumatic brain injury, multiple sclerosis, and stroke. Pediatric experience is available through a minor or major rotation depending on prior experience and preference. Populations include a range of neurodevelopmental disorders (e.g.,

cerebral palsy, prematurity, perinatal stroke, hydrocephalus, FASD), genetic conditions (e.g., Down's syndrome, NF1), neurological conditions (e.g., seizures, multiple sclerosis), acquired brain injury (e.g., stroke, traumatic brain injury), and specific learning disabilities (SLD). Intervention opportunities (cognitive rehabilitation and cognitive behavioral therapy) are available across the lifespan. There are potential opportunities to work with psychometrists in adult and pediatric settings, depending on availability.

Inpatient Rehabilitation Unit (IRU)

The inpatient rotation will occur at Wellstar Kennestone Hospital, a 633-bed Level 1 Trauma Center. In 2022, the IRU was ranked #32 in the nation by U.S. News and World Report. The IRU patient population largely consists of individuals with acquired brain injuries (mostly post-acute stroke) but also includes individuals with spinal cord injuries, complex orthopedic injuries, amputation, and other neurological or medically complex conditions. The Resident will work in a multidisciplinary team and conduct bedside neurobehavioral evaluations and brief interventions for mood and behavior management. There will be a strong emphasis on neuroimaging and psychopharmacology. The Resident will also be involved in family/caregiver interventions (e.g., caregiver support groups, family education lectures, individual family education/training).

Additional inpatient rehabilitation opportunities are available at Wellstar North Fulton Hospital with Drs. Steward and Bayer depending on Resident interest and experience level.

Additional experiences within Kennestone Hospital, depending on Resident interest

- Left Ventricular Assist Device (LVAD) evaluations
- Bariatric surgery evaluations
- Potential hospital consults (e.g., dementia vs delirium)

Research

We are dedicated to evidence-based practice, using empirical research to drive clinical practice. Application of research and diversity considerations to clinical practice is emphasized throughout all clinical rotations. Select supervisors are actively involved in clinical research and publication. The Resident will work with one or multiple providers to produce a clinical research project (e.g., poster abstract submission at minimum).

Didactics

- Neuropsychology Case Conference (weekly)
 - Neuropsychologists / Residents rotate through a schedule leading a 60-minute didactic on a specified topic including review of relevant literature and clinical presentation of that syndrome/injury. Diversity dimensions will be incorporated throughout these presentations.
- Neuroimaging Seminar (2x per month, October to July)

- The seminar begins with a three week focus on neuroanatomy followed by neuroimaging topics. Topics will be relevant to clinical practice and research from a neuropsychologist's perspective. Clinical cases will be discussed and used for illustration.
- Professional Development (2x per month October to July and weekly otherwise)
 - The Residents and members of the Training Committee meet to discuss a broad range of topics (e.g., ethics, diversity, neurobehavioral syndromes, licensure, supervision, board certification, job search, etc.). These topics can be tailored to the interests/needs of the Residents. This time would also be utilized for NCEs, practice fact findings/ethics vignettes, and other board certification preparation.
- Experiential excursions (5th Friday afternoons)
 - Experiential excursions are used to enhance diversity training. Recent examples of experiential excursions have been visiting the Dr. Martin Luther King, Jr. National Park, observing a worship service at a local Masjid (mosque), and attending The Hot Wing King, a play with LGBTQ+ themes.
- Health Psychology Residency Didactics (weekly)
 - These didactics are led by faculty and residents of the Wellstar Health Psychology Residency. Selected ones will be specifically required for Neuropsychology residents while all others will be optional depending on the interest and bandwidth of the individual resident. Diversity dimensions will be incorporated throughout these presentations.

At the start of the senior resident's second year, they will take on the responsibility of coordinating the didactic schedule including sending reminders to the presenters, ensuring presenters are scheduled, and ensuring needed topics are being taught to meet the needs of the junior resident or at the request of the Training Committee.

Additional optional didactics are available through a variety of avenues including Wellstar Neurology Clinical Conference, Wellstar Ethics Grand Rounds, Wellstar MCG Neurology Grand Rounds, Wellstar MCG Psychiatry Grand Rounds, and the APPCN Didactics Library. Residents are also encouraged to engage with freely available resources such as KnowNeuropsychology and Navigating Neuropsychology to supplement their learning.

Program Milestones and Evaluative Procedures

Goal: To facilitate independent practice and board certification preparation.

Residents' evaluation of the program- Residents will have the opportunity to evaluate supervisors at the midpoint and endpoint of each clinical rotation (every 2 months). Residents are invited to provide a formal evaluation of the program upon completion. Of

course, informal feedback regarding supervisor performance and any aspect of the program will be welcome throughout the Resident's appointment.

Neuropsychology Competency Examination (NCE)

The Resident must pass a mock ABPP oral examination fact finding exercise, the NCE, to complete Residency. The NCE will be conducted at the beginning of the 1st year to establish a baseline and help develop a specialized training program. The NCE will be repeated at the beginning of the 2nd year to assess progress. If not passed, areas of weakness will continue to be addressed and the Resident will engage in the exercise in regular intervals until completed. Each performance will be evaluated, and ongoing areas of weakness will continue to be updated and addressed. Residents cannot complete the program without passing the fact finding. A pass equals achieving an independent level (i.e., for the average of both faculty ratings, in each of the main areas (I-III) the individual items are rated with a majority of 1 and no individual item is rated a 3 or 4).

Licensure

The Resident is expected to become a licensed psychologist in the state of Georgia (GA) by completion of the Residency unless employment in a different state has been secured by December of their 2nd year; in that case, they would be expected to secure licensure in a state that would allow them to practice at their intended place of employment by the completion of their Residency. The rationale is that becoming a licensed psychologist is needed to achieve independent practice, a primary goal of the Residency.

The following timeline is expected:

- 1st year - Pass EPPP Part 1. The Resident will be expected to take the EPPP Part 1 with enough time to take the exam again prior to the end of the first training year if needed.
- 2nd year - Pass EPPP Part 2, GA jurisprudence examination and oral examination. The Resident will complete Part 2 during the first half of the 2nd year. Attempting the oral exam shortly after completion of EPPP Part 2 will be encouraged to allow for time to retake the exam before the end of the 2nd year of Residency if needed.

APPCN mock written exam

An APPCN mock written exam will be given at the beginning of the 2nd year to assess areas of weakness in an effort to target training throughout the rest of the year.

Clinical Rotations

At the beginning of each rotation, collaboratively, the Resident and supervisor will determine expectations and goals. This discussion is based on the Resident's training plan. Bidirectional evaluations will be completed during the middle and end of rotations. Evaluations will be discussed between the Resident and supervisor. Broader topics will be discussed during Training Committee meetings. At the end of each clinical rotation, the Resident's training plan will be revised based on areas of growth and ongoing areas of weakness.

Disseminating Research – The Resident will be matched with a research mentor to support them in a research project. The minimum expectation is that a poster abstract will be submitted to a research conference based on the Resident's project. Progress will be monitored throughout the 2 years. The Resident will be assisted with management of timeline by the research mentor. If the Resident is behind schedule, a plan will be developed to help the Resident get back on track. Bidirectional feedback will be provided via the research evaluation forms found below.

Teaching - The Resident will complete a Foundation Talk near the end of each training year. This will occur during Neuropsychology Didactics where the Resident will provide a comprehensive review of a neuropsychological topic. In preparation, the Resident will receive feedback after each non-Foundation Talk didactic presentation they deliver. Strengths and weaknesses will be identified and communicated by the Training Director. The designated Foundation Talk at the end of the Resident's first year will be formally evaluated by the Training Committee; feedback will be provided by the Training Director. Areas of improvement will be targeted and incorporated into the training plan during the second year with growth expected and evidenced during the Foundation Talk at the end of the second year which will also be formally evaluated. A pass equals achieving an independent level of teaching at the second Foundation Talk (i.e., all evaluation items are rated with a majority of 1 across the faculty who submit evaluation forms and no individual item is rated a 3 or higher by more than 1 faculty member).

Independence - Finally, prior to completing Residency, the Resident will submit 2 cases for review and defense, mirroring the ABPP-CN board certification practice defense process. These will be cases that are driven and conceptualized by the Resident with minimal input from the supervisor until just prior to final report draft approval (although adequate supervision and patient care must be maintained). Attempts at completion will be encouraged 4 months prior to anticipated program graduation. If performance is below expectations, areas of weakness will be addressed with Resident and targeted until a pass is achieved. A pass equals achieving an independent level of practice (i.e., all evaluation items are rated with a majority of 1 across the faculty who submit evaluation forms and no individual item is rated a 3 or higher by more than 1 faculty member).

Benefits

We proudly offer a comprehensive benefits package, including:

- Competitive base salary
- Relocation assistance
- CE stipend and leave allowance
- Paid time off for vacation, holidays, and sick leave
- 403(b) retirement plan with employer match
- Medical, dental, vision, life, and short- and long-term disability insurance
- Free gym access
- Concierge service (complimentary assistance to run errands, plan trips, etc.)

- 4 weeks paid parental leave (after 6 months of employment)
- Adoption financial assistance/leave, fertility treatment insurance coverage
- Subsidized back-up child/pet/elder care
- Convenient and free parking across training sites
- We are an eligible employer under the Public Service Loan Forgiveness program.
- This position is H-1B visa sponsorship eligible.

CE funds can be used for EPPP/licensure fees since Georgia psychology licensure is a requirement for program completion. It can also be used for neuropsychology-related books or conferences.

Application Deadline is December 31st:

1. Please utilize APPA CAS to submit the following documents:
 - o Cover letter outlining training goals and fit
 - o Curriculum Vitae
 - o Graduate transcripts (unofficial copies are acceptable)
 - o 2 de-identified neuropsychological reports that show breadth in patient demographics, diagnosis, and diversity factors
 - o [Doctoral Training Verification Form](#)
 - o 3 letters of recommendation
2. As these positions are supported through our physician recruitment team, please forward a copy of your CV to Mr. AJ Wilson, physician recruiter for our service line (Andrew.Wilson@wellstar.org).