

Clinical Pastoral Education Faculty

Dir. of Clinical Pastoral Education:

Rev. Dr. Rosalynn Curry
ACPE Certified Educator
rosalynn.curry@wellstar.org

Regional Director & CPE Educator:

Rev. Dr. Patricia Symonette
ACPE Certified Educator
patricia.symonette@wellstar.org

CPE Educator:

Rev. Sunghee Han
ACPE Certified Educator
sunghee.han@wellstar.org

How to Apply

- ❖ Visit our website at: Wellstar.org/for-patients/Spiritual-health
- ❖ Download and complete the ACPE application
- ❖ Send your application to: cpe@wellstar.org and call (470) 956-6891 to pay your \$60 non-refundable application fee or you may mail your application along with your \$60 non-refundable application fee made payable to "Wellstar":

Wellstar CPE Center
Department of Spiritual Health
3911 Mulkey Way
Austell, GA 30106

- ❖ Tuition for the unit is \$500

Wellstar CPE Center



ACPE CERTIFIED

Wellstar CPE Center
is provisionally accredited through:

ACPE – The Standard for Spiritual Care and Education

Lynett Glass
Executive Director
ACPE, Inc.

1 Concourse Pkwy, Suite 800
Atlanta, GA 30328
(404) 320-1472



Wellstar



Wellstar

What is CPE?

Clinical Pastoral Education (CPE) is reflective inter-faith hands-on clinical ministry. You will be working with patients, families, and staff to provide emotional, spiritual, and human-centered care as you tend to individual sources of ultimate meaning. Students will learn essential care-giving interventions to provide evidence-based spiritual care.

What You'll Learn

You will have the opportunity to work with an educator and a small group of peers to reflect theologically following encounters, attempting to open up and penetrate matters which are present but hidden. As a CPE student you will reflect critically on yourself both personally and professionally. Developing insights into how you address and attend to crucial needs. You will also examine how you articulate spiritual meaning and help others to find meaning in their own personal faith practices and communities.

What to Expect

Fully accredited by the ACPE, Wellstar offers a comprehensive CPE program to qualified applicants without regard to race, culture, ethnicity, gender/gender identity, religious/spiritual beliefs, or sexual orientation. The program provides students with an opportunity to learn through a blend of providing spiritual care, case studies, individual supervision and group interaction.

A unit of CPE is accomplished through 400 hours of work. This includes a minimum of 100 hours of education, a minimum of 250 hours of supervised clinical practice in spiritual care, and an additional 50 hours supporting the program as needed.

Why Wellstar?

- Flexible shifts
- Occasionally, we offer evening classes to accommodate working professionals
- Chaplains are valued members of the the medical team
- You can work in a variety of clinical settings including, Trauma, Emergency Department, Acute Care, Surgery, Women's Services, Psychiatric Care, Oncology, Neurologic Care, Pediatric Care, Senior Assisted Living and more.

Clinical Placement Sites

Wellstar Kennestone Regional Medical Center
677 Church Street, Marietta, GA 30060

Wellstar Douglas Medical Center
8954 Hospital Dr, Douglasville, GA 30134

Wellstar North Fulton Hospital
3000 Hospital Blvd, Roswell, GA 30076

Wellstar West Georgia Medical Center
1514 Vernon Rd, LaGrange, GA 30240

Wellstar Spalding Medical Center
601 S. 8th St, Griffin, GA 30224

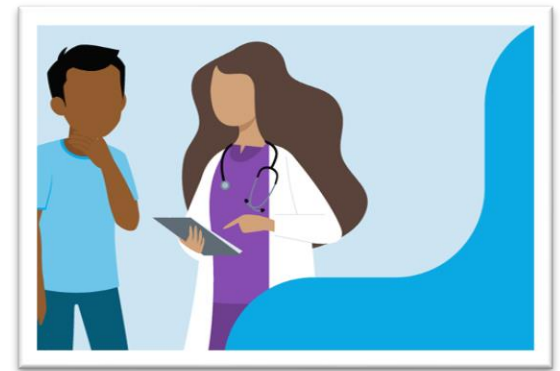
Wellstar Cobb Medical Center
3950 Austell Rd, Austell, GA 30106

Wellstar Atherton Place
111 Tower Rd, Marietta, GA 30060

Wellstar Infusion Center
340 Kennestone Hospital Blvd
Marietta, GA 30060

Wellstar Paulding Medical Center
2518 Jimmy Lee Smith Pkwy, Hiram, GA 30141

Paulding Nursing Rehabilitation
600 W. Memorial Dr. Dallas, GA 30141.



Upcoming Units

Summer 2024 CPE Unit:

May 28-Aug 11, 2024

Intensive Unit

(Full-time 40 hrs/week)

Fall 2024 CPE Unit:

Sept 9–Dec 22, 2024

16-week Extended Unit

(Approximately 26 hrs/week)

Academic Extended CPE Unit:

Sept 9, 2024–April 13, 2025

30-week Extended Unit

(Approximately 14 hrs/week)

Winter-Spring 2025 CPE Unit:

Jan 27-May 11, 2025

Extended Unit

(Approximately 26 hrs/week)

